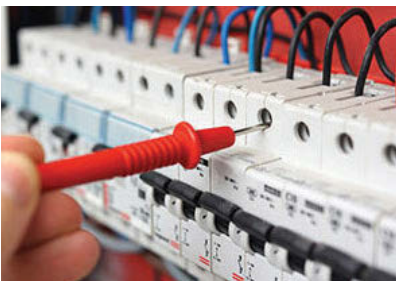


# **ROWELEC**

**LTD**



Industrial, commercial and domestic  
electrical contracting and maintenance services

Based in Oldbury, West Midlands, Rowelec is a full service electrical contractor offering reliable, professional services in all aspects of design, installation and commissioning of electrical systems within all markets including public and historic buildings, and the retail, commercial, education, healthcare and industrial sectors.

A widely skilled team, extensive certification and years of experience enable us to capably deliver design, the installation and maintenance of everything from vast heavy industrial systems, working in hazardous areas, to an extra lighting or power point. We can supply full drawings and O&M manuals where called for, and ECA certification on all installations.

For Rowelec, one of the most important aspects is customer service; interpreting your requirements, delivering cost effective results and exceeding your expectations. Our goal is to establish long-term working relationships with our customers and an intimate understanding of your electrical systems.



Our range of electrical contracting services includes:

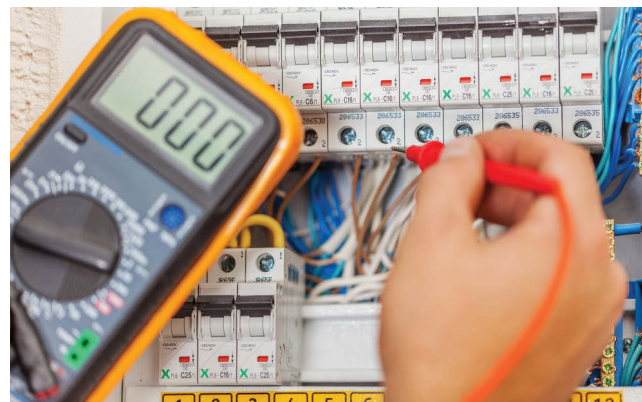
- *High and Low Voltage power supplies*
- *Comprehensive installations including CCTV, data, fire alarms and air conditioning systems*
- *Inspection and Testing*
- *Portable Appliance Testing (PAT Testing)*
- *Installation and Testing of Emergency Lighting*
- *Cable fault location and repair*
- *Breakdown Service*
- *Expert design and planning service*
- *Maintenance Packages*
- *Health & Safety Risk Assessments & Method Statements*
- *All kinds of lighting and power systems*
- *Bespoke control systems and software*

## Why Choose Us?

Established in 1971, Rowelec has built an enviable reputation over the years for quality electrical installations and maintenance services. We have grown steadily over the years, but still retain the same care and attention that a small family business brings. From general power and lighting contracts to specialised electrical and data installations, Rowelec's experienced electrical engineering team will be able to provide a solution for your requirements.

Working with small and large businesses on both simple and complex installations, our team of electrical engineers provides experienced industry knowledge combined with an excellent track record.

- *All engineers trained to latest IEE regulations*
- *Exceptional quality standards*
- *Health & safety policy*
- *Staff hold JIB cards*
- *PASMA trained staff*
- *Wide range of product installations*
- *Domestic and commercial services*
- *Out of hours and weekend service*
- *Design, testing and repair support*



## **Installations**

Rowelec offer complete commercial electrical installation and testing services. We carry out installations of CCTV (both conventional and i.p based) and data systems, fire alarm systems and air conditioning systems for many different businesses including the V&A Museum and historic buildings such as Hagley Hall in the West Midlands, plus large Housing Associations and Local Authorities including Sandwell, Birmingham, Wolverhampton, Cardiff and Leicester City Councils. Complete or part refurbishment is also a service that we are able to provide to customers.

## **Inspection and testing**

Rowelec offers a full test and inspection service to establish the safety of installations and on-going Condition/Periodic Inspection Reporting to identify any possible deterioration, regardless of how big or small. Periodic testing is necessary, as all electrical installations deteriorate due to factors such as damage, wear and tear, corrosion and excessive electrical overloading etc. All installations are tested and inspected to BS7671 with the company being registered with ECA. We also offer PAT testing for compliance to Electricity at Work Regulations; providing safety certificates with all completed tests and inspections.

## **Surge Protection**

As a result of so many IT and power supplies being destroyed by lightning strikes and in accordance with the new 17th Edition Amendments of the I.E.T. Wiring Regulations, customers should consider a survey by Rowelec regarding surge protection to their premises. As from January 1st 2012 surge protection is mandatory for all electrical installations.

## **Continual or periodic maintenance services**

We are able to offer a fully tailored maintenance program to suit all requirements. This could very well be outside the client's own hours of working or indeed over an annual shutdown period. Whatever the need Rowelec will be able to develop a Planned Preventative Maintenance program to maximise your productivity and electrical safety, minimising any possible downtime.

## **Supply and installation of generators**

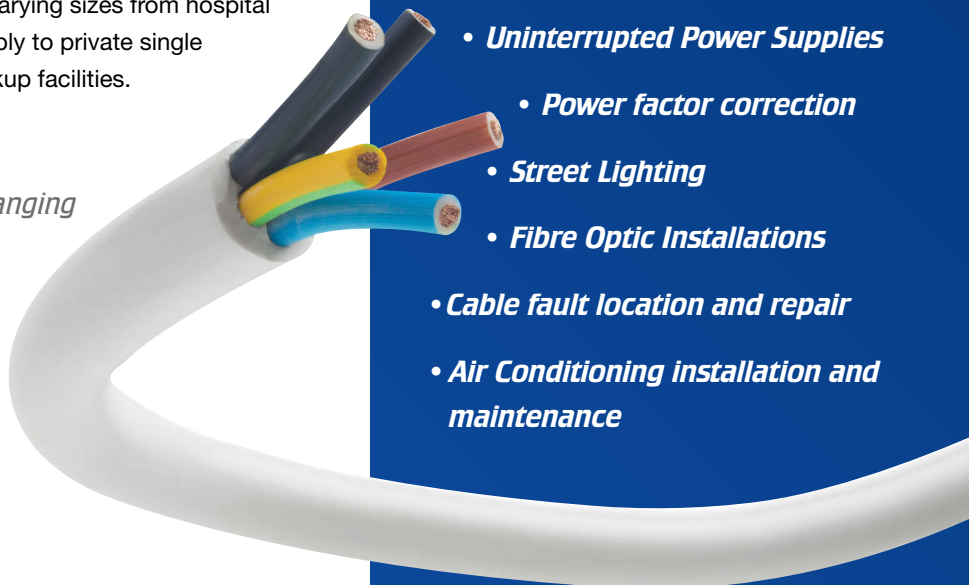
Rowelec has installed many generators of varying sizes from hospital standby or temporary construction site supply to private single dwelling automatic mains failure (AMF) backup facilities.

*Whatever your requirements, from changing a lamp to a complete installation, for specialist industrial electrical contracting, design, installations and maintenance, speak to the experts at Rowelec Ltd.*

*We look forward to hearing from you!*

Our diverse range of commercial, industrial and domestic electrical contracting services includes:

- **Project consultancy services**
- **Industrial installations**
- **High voltage works**
- **Design build and maintenance to bespoke specifications**
- **Commercial installations**
- **Data Installations**
- **CCTV - conventional and i.p.based**
- **Emergency lighting**
- **Fire alarm systems**
- **Domestic installations**
- **Home Automation**
- **Temporary worksite supplies**
- **Building management services**
- **Electrical inspections**
- **Portable Appliance Testing**
- **Continual and periodic maintenance**
- **Emergency call out service**
- **Supply & installation of Generators**
- **Refurbishment**
- **Uninterrupted Power Supplies**
- **Power factor correction**
- **Street Lighting**
- **Fibre Optic Installations**
- **Cable fault location and repair**
- **Air Conditioning installation and maintenance**



**Contact us...**

Please contact us for any electrical contracting and maintenance services that you may require using the details below. Based in the West Midlands, we work with businesses and customers throughout the UK.

**Rowelec Limited**

Churchbridge

Oldbury

West Midlands B69 2AX

Phone: 0121 544 1117

Fax: 0121 544 2228

Email: [enquiries@rowelec.co.uk](mailto:enquiries@rowelec.co.uk)

[www.rowelec.co.uk](http://www.rowelec.co.uk)

